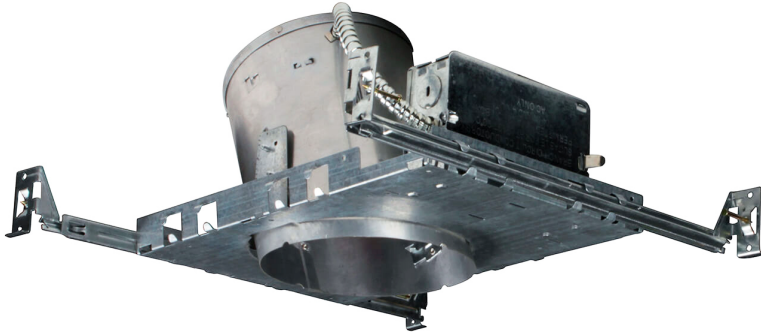
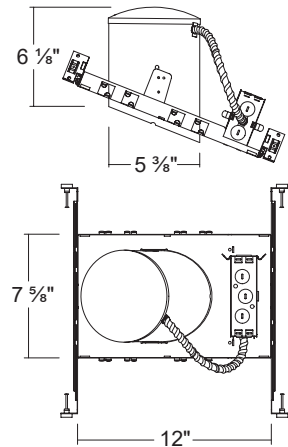


## LED590ICA / LED590ICA-01V

5" Slope IC Air-Tight LED Dedicated New construction Housing



### Dimensions



## SPECIFICATION

### Housing

- Designed for use in ceiling with slopes from 2/12 to 6/12

### Plaster Frame

- Galvanized steel construction. The housing can be removed from plaster frame to provide access to the junction box

### Junction Box

- Listed for through branch circuit wiring
- Contains seven 7/8" knockouts and four Romex pryouts with strain relief

### Bar Hanger

- Pre-installed Real nail easily installs in regular lumber, engineered lumber
- Bar Hangers are adjustable from 13-5/8" to 25" and can be repositioned 90 degree on plaster frame

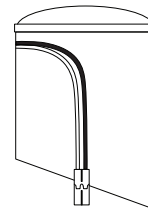
### Listings

- cULus Listed for Damp Location
- cULus Listed for Feed Through
- Certified under ASTM-E283 for Air tight construction

## CONNECTOR

### LED590ICA

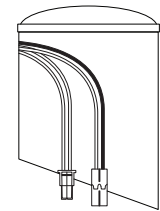
Triac Dimming Ver.



Ideal connector

### LED590ICA-01V

0-10V Dimming Ver.



Molex connector Ideal connector

## ORDERING INFORMATION

Model No.	Dimming	Description
LED590ICA	Triac Dimming	5" Slope IC Air-Tight Dedicated New construction Housing
LED590ICA-01V	0-10V Dimming	5" Slope IC Air-Tight Dedicated New construction Housing

## COMPATIBLE TRIMS

### LED590ICA

#### Model NO.

SLKT500  
SLKT503  
SLKT500-3CCT  
SLKT503-3CCT  
SLKT500-5CCT  
SLKT503-5CCT

#### Description

5 inch LED Slope Round Smooth Retrofit kit  
5 inch LED Slope Round Baffle Retrofit kit  
5 inch Selectable 3 CCT LED Slope Round Smooth Retrofit kit  
5 inch Selectable 3 CCT LED Slope Round Baffle Retrofit kit  
5 inch Selectable 5 CCT LED Slope Round Smooth Retrofit kit  
5 inch Selectable 5 CCT LED Slope Round Baffle Retrofit kit

### LED590ICA-01V

#### Model NO.

SLKT500-5CCT-M  
SLKT503-5CCT-M

#### Description

5 inch Selectable 5 CCT LED Slope Round Smooth Retrofit kit  
5 inch Selectable 5 CCT LED Slope Round Baffle Retrofit kit